



# INDOFINE Chemical Company, Inc.

121 Stryker Lane, Bldg. 30, Suite 1 • Hillsborough, NJ 08844 • U.S.A.

Phone: (908) 359-6778 • FAX: (908) 359-1179

website: [www.indofinechemical.com](http://www.indofinechemical.com)

e-mail: [chemical@indofinechemical.com](mailto:chemical@indofinechemical.com)

## CERTIFICATE OF ANALYSIS

Catalog Number: 06-657

Product Name: GROSVENORINE

CAS Number: [156980-60-8]

Lot Number: 2007446

Molecular Weight: 740.66

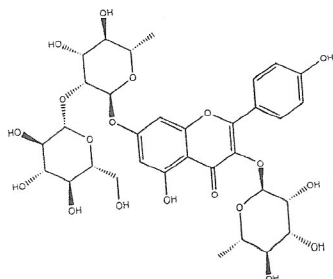
Chemical Formula: C<sub>33</sub>H<sub>40</sub>O<sub>19</sub>

Appearance: Yellow powder

Water Content: 0.9%

Storage: Store in a cool, dry place. Protect from light.

Purity(HPLC): 99.94%



Prepared by:  
Ramesh Mandadi  
Ramesh Mandadi  
Director of Operations

Reviewed and approved by:  
Sujata Moton  
S. Moton  
VP



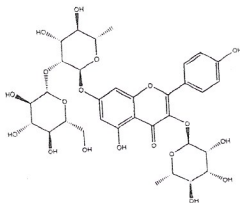
# INDOFINE Chemical Company, Inc.

121 Stryker Lane, Bldg. 30, Suite 1 • Hillsborough, NJ 08844 • U.S.A.

Phone: (908) 359-6778 • FAX: (908) 359-1179

website: [www.indofinechemical.com](http://www.indofinechemical.com)

e-mail: [chemical@indofinechemical.com](mailto:chemical@indofinechemical.com)



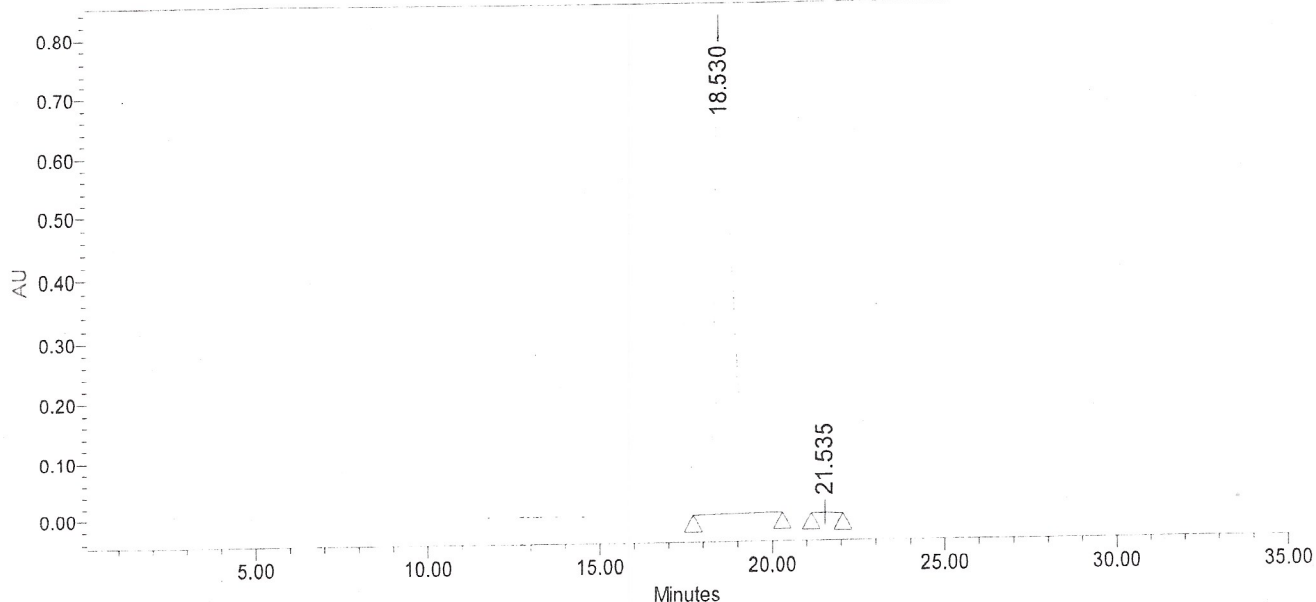
## HPLC ANALYSIS

Catalog No.: 06-657  
Product Name: Grosvenorine  
Lot No.: 2007446

### SAMPLE INFORMATION

Sample Name:	Grosvenorine	Acquired By:	cxy01
Sample Type:	Unknown	Sample Set Name:	
Vial:	73	Acq. Method Set:	Grosvenorine
Injection #:	1	Processing Method:	sample
Injection Volume:	10.00 ul	Channel Name:	254.0nm
Run Time:	35.0 Minutes	Proc. Chnl. Descr.:	PDA 254.0 nm

### Auto-Scaled Chromatogram



### Peak Results

	Name	RT	Area	% Area	USP Plate Count	USP Resolution
1		18.530	26759805	99.94	6776.45	
2		21.535	15482	0.06	15257.81	1.68

Prepared by:

Ramesh Mandadi

Ramesh Mandadi

Director of Operations

Reviewed and approved by:

Sujata Moton

S. Moton

VP